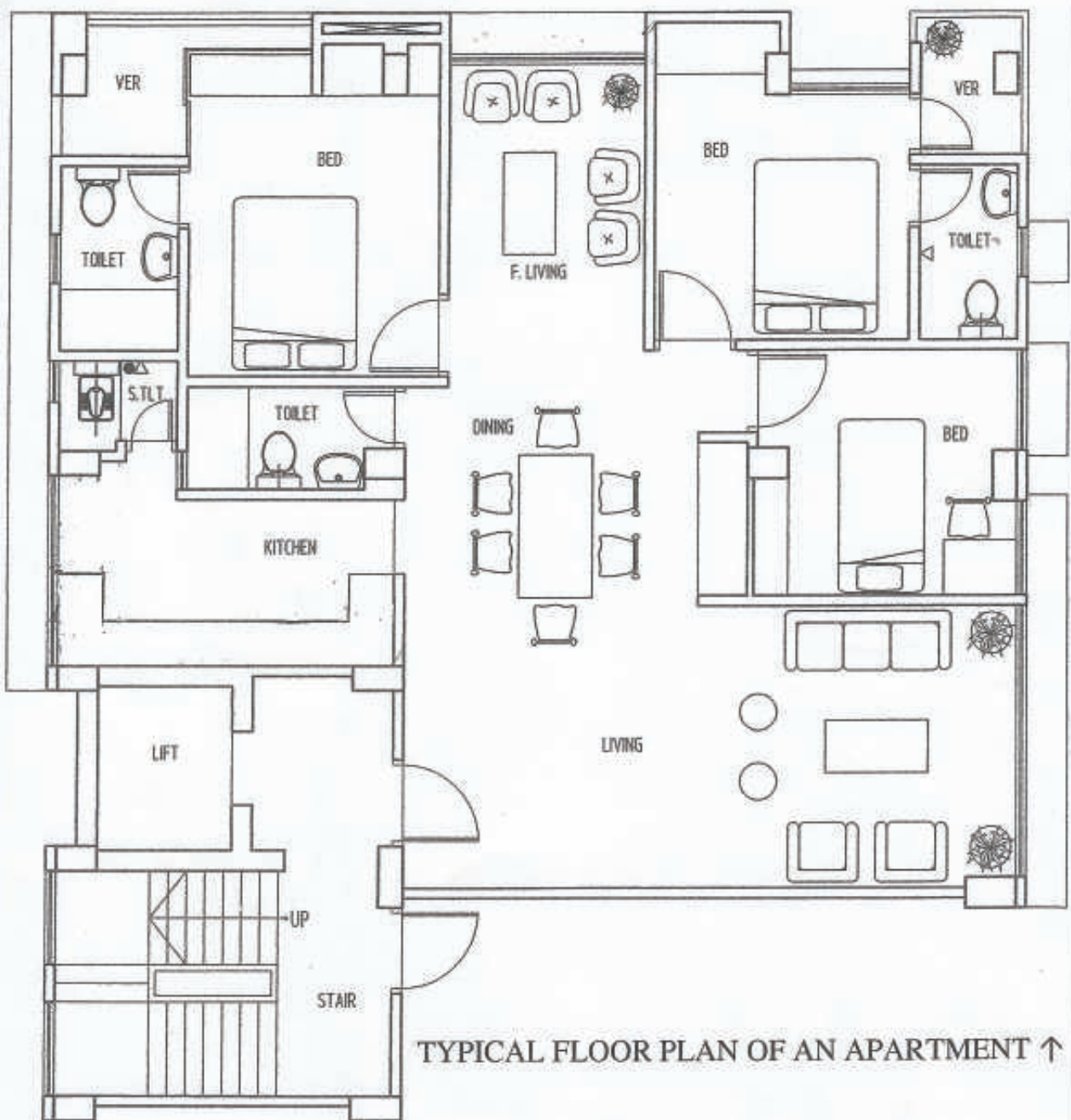


Luxurious Apartment on sale at Lalmatia, Dhaka
Superb residential area adjoined to Dhanmondi, heart of Dhaka City!

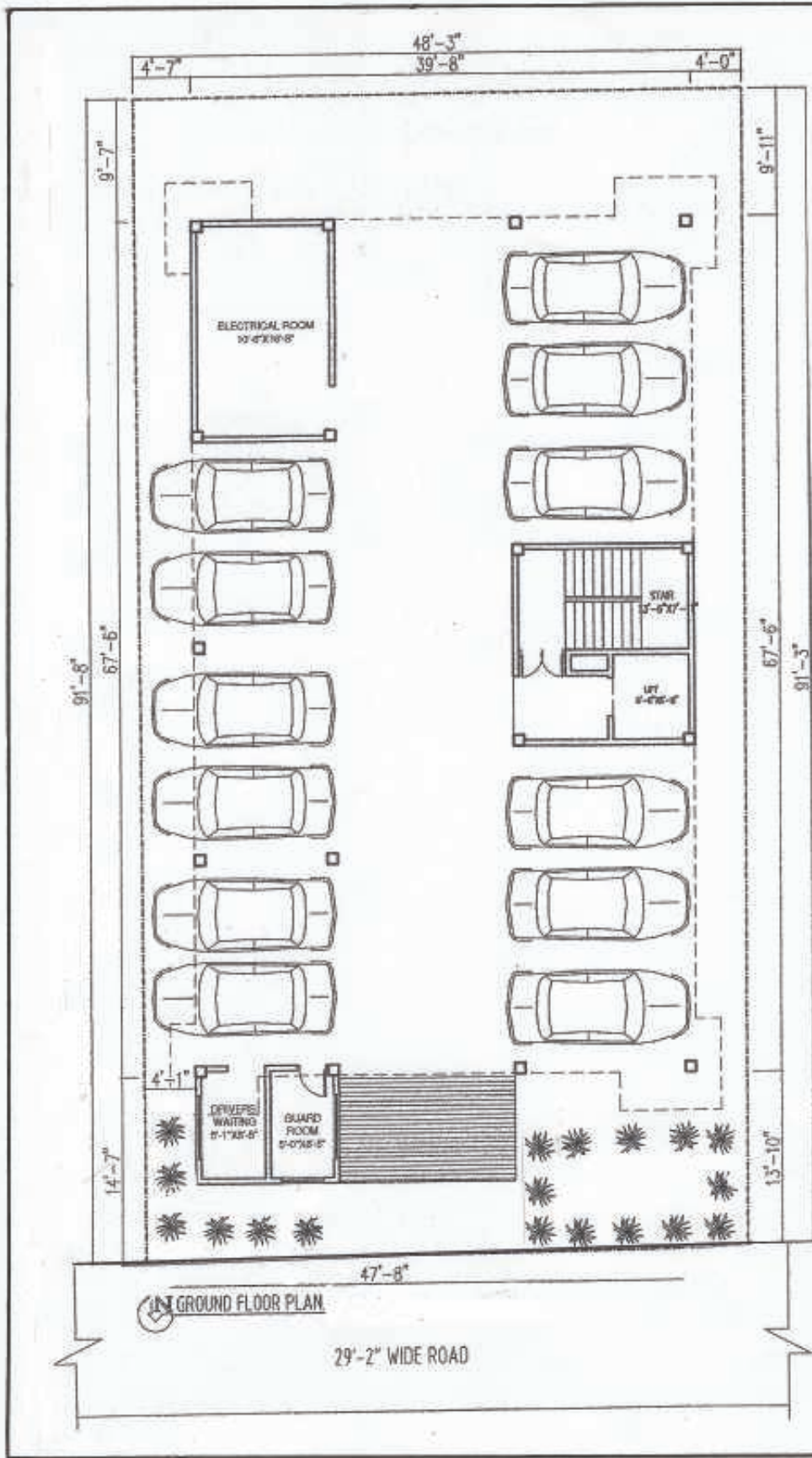


- **Luxurious apartments** on sale at Lalmatia, a superb residential area in heart of Dhaka city, adjoined to Dhanmondi, just a short walk to Schools, Universities, Hospitals and Super Markets.
- **Features-** eight storied building with 14 apartments (each 1422 sqft) located at 1/8 Block E, Lalmatia, and Dhaka, fronted by 30 feet wide road. Each apartment includes 3 bed rooms/ cupboards & 3 bathrooms, formal living and family areas, overhead storage space, modern kitchen, wall cabinet, space for freezers and washing machine, 1 servant toilet, 2 balconies, sliding aluminium windows, tinted glass, timber doors, high quality tiles and security grills.
- **Common facilities-** ground floor car parking, lift, generator, water, gas, electricity, telephone/ TV/ intercom lines provided.
- **Show apartment** can be viewed any time at construction site.
- **Delivery** of complete apartment will be made within 18 months after full payment received.
- **Building designed** and constructed by SAWA Associates Ltd, House 74 (new), and Road 11/A, Dhanmondi, Dhaka, a reputable consulting firm managed by Architects and Engineers.
- **Contact** for details:
 1. Project Engineer- Mr Nazrul Islam- mobile +880 1716052187
 2. Building Manager- Mr Md Nazimuddin- mobile +880 1715300745
 3. Contact in Sydney- Mr Faruque- mobile: 0401357772



TYPICAL FLOOR PLAN OF AN APARTMENT ↑

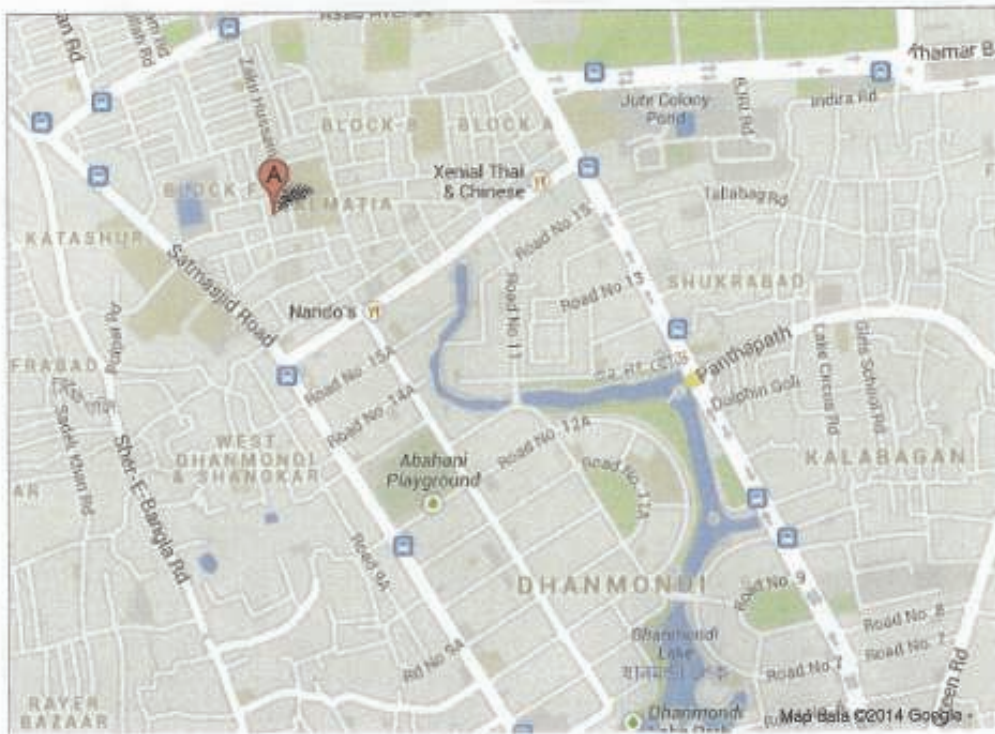
 1ST FLOOR PLAN (NORTH)



GROUND FLOOR PLAN

29'-2" WIDE ROAD

PROJECT	
PROPOSED RESIDENTIAL BUILDING AT 1/8, BLOCK-E-LALMATA HOUSING SOCIETY, DHAKA-1207.	
OWNER'S NAME	DATE
FARQUE BROTHER'S.	
ARCHITECT	DATE
ACEL SEMPAS ARMED CHOUDHURY B.Arch. (M.Arch)	
ACEL SHAHEERAT DASSEN B. Arch.(M.Arch)	
PROJECT TITLE	
GROUND FLOOR PLAN.	
CONSULTANT	DATE
SAWA ASSOCIATES LTD.	
HOUSE NO. 24, ROAD NO.-11/A	
GHANASHYAM 2/A	
DHAKA	
JOB NO.	
SHRINU BANERJEE	
SR-2-4499(DWG)	
DATE	
14.12.2016	
CAD FILE	PROJECT NO.
D:\ARCHIT\2016	
SCALE	DATE
1:1	10-11-16



Building located at 1/6 Block E, Lalmatia, Dhaka 1207 → see at A